



# DTSC-200

## Automatic Transfer Switch Controller

### DESCRIPTION

#### I/Os

- **FlexRange™** - True R.M.S. 3-phase voltage measuring with separate inputs for 120 Vac (max. 150 Vac) or 480 Vac (max. 600 Vac) for both Source 1 and Source 2
- True R.M.S. 3-phase load current/power
- 12 configurable discrete inputs
- **LogicsManager™** - 9 programmable discrete outputs
- CANopen communication port
- RS-485 Modbus RTU Slave interface port

#### Monitoring (ANSI #)

- **Source monitoring**
  - Configurable fail and restore limits/timers for:
    - Over / under voltage (59/27)
    - Over / under frequency (810/U)
    - Voltage balance (47)
    - Phase rotation
- **Load monitoring**
  - Overload (32)
  - Overcurrent (50/51)
- **Switch monitoring**
  - Switch position feedback
  - Transfer failure
- Synch check (in-phase monitoring) (25)
- Battery over / under voltage
- Parallel time monitoring

#### Features

- Open, delayed or closed transition transfer
- In-phase monitoring (synch check)
- Make-before-break overlap time < 100 ms
- Extended parallel
- Preferred source selection
- Transfer and/or retransfer inhibit
- Load shed and/or restore
- Elevator pre-signal
- Engine exerciser (load/no-load) test
- Configurable via PC and/or front panel
- Multi-level password protection
- Multi-language capability (English & German, Spanish, Polish, Russian included, other languages upon request)
- IKD-1 DI/DO expansion board connectivity
- Modem connectivity with DPC cable (P/N 5417-557)
- Remote control via RS-485 / CAN / discrete input signals

- For ATS control using circuit breakers or latching contactors
- Open, delayed or closed transition transfer
- In-Phase monitoring (synch check) for all transition types
- **LogicsManager™** programmable logic functions eliminate relay logic or PLC's
- **FlexApp™** technology for Main-Gen, Gen-Gen or Main-Main applications
- **FlexRange™** true R.M.S. voltage, current and power sensing
- **DynamicsLCD™** flexible, multifunctional display
- LEDs for source availability and breaker status
- Freely configurable, expandable discrete I/O
- Adjustable timers
- Source selection
- Transfer/return inhibit
- Extended parallel
- Load shed and restore
- Engine exerciser (load/no-load) routine with fully adjustable interval
- PC and/or front display configuration
- CANopen / Modbus RTU
- 6.5 to 40.0 Vdc powered
- CE marked, Ghost-R
- UL/cUL Listed

### APPLICATIONS

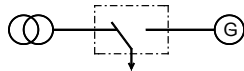
The extremely flexible DTSC-200 controller is easily configured for a wide range of automatic transfer switch applications including Main-Gen, Gen-Gen or Main-Main systems using circuit breakers or latching contactors. Source transfer can be performed as open, delayed or closed transition with in-phase monitoring (synch check) that can be enabled for all transition types to ensure smooth transfer. The closed transition overlap time can be limited to less than 100 ms for momentary, make-before-break transfers, or extended indefinitely for paralleling via discrete input. "Custom" features like transfer inhibit, source selection, load shed/restore, elevator pre-signal and engine test programs come standard.

**LogicsManager™** - Programmable Boolean logic functions along with ample, expandable discrete I/O allows for complex transfer schemes **without using external relay logic or a separate PLC!**

**FlexApp™** - Easily configures the DTSC-200 for:

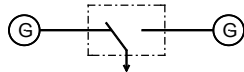
#### • Utility-to-Generator

Utility is preferred with a generator as the emergency source



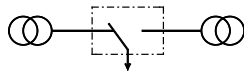
#### • Generator-to-Generator

One genset is preferred with a second genset as backup



#### • Utility-to-Utility

Utility is preferred with second utility as the emergency source



**DynamicsLCD™** - The graphic LCD interface with sealed soft-keys displays source voltage, frequency, phase rotation, current, real/reactive power, I/O status and alarms. Maintenance calls and event history (300 FIFO entries with real time clock and 6 year battery) are easily viewed and are password protected.

A line diagram with four high-intensity LEDs clearly displays source availability and breaker closed status.

The galvanically-isolated CANopen port permits connection of up to (2) Woodward IKD-1 modules, providing as much as 16 additional discrete inputs and outputs.

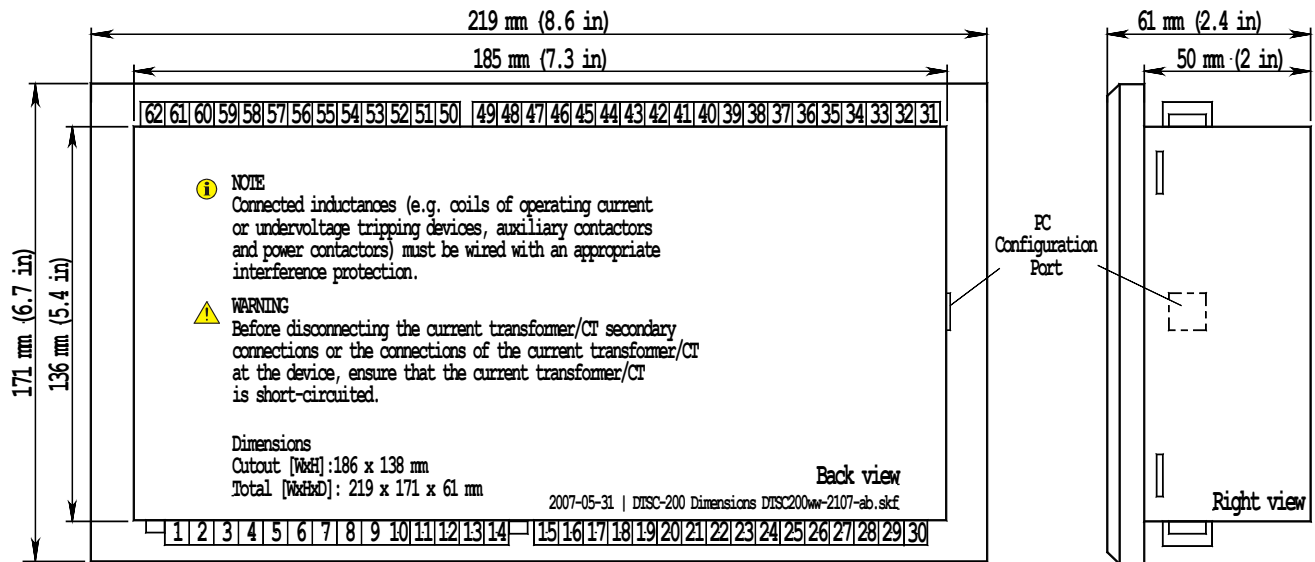
RS-485 Modbus RTU Slave full-duplex communication allows for remote annunciation and SCADA interface.

# SPECIFICATIONS

Power supply ..... 12/24 Vdc (6.5 to 40.0 Vdc; not buffered)  
 Inrush current ..... max. 50 A peak, 1 ms  
 Input capacitance ..... 2000 µF  
 Intrinsic consumption ..... max. 8 W  
     in power save mode (backlight, relays off) ..... 3 W  
 Ambient temperature (operation) ..... -20 to 60 °C / -4 to 140 °F  
 Ambient temperature (storage) ..... -30 to 80 °C / -22 to 176 °F  
 Max. operating altitude ..... 2000 m (6,500 ft)  
 Ambient humidity ..... 95 %, non-condensing  
**Voltage** ..... (both ranges within one unit on different terminals,  $\lambda/\Delta$ )  
     100 Vac [1] Rated ( $V_{rated}$ ) ..... 69/120 Vac  
     Max. value ( $V_{max}$ ) ..... 86/150 Vac  
     Rated ( $V_{phase-ground}$ ) ..... 150 Vac  
     Rated surge volt. ( $V_{surge}$ ) ..... 2.5 kV  
**and** 400 Vac [4] Rated ( $V_{rated}$ ) ..... 277/480 Vac  
     Max. value ( $V_{max}$ ) ..... 346/600 Vac  
     Rated ( $V_{phase-ground}$ ) ..... 300 Vac  
     Rated surge volt. ( $V_{surge}$ ) ..... 4.0 kV  
 Accuracy ..... Class 1  
 Measurable alternator windings ..... 3p-3w, 3p-4w, 1p-2w, 1p-3w  
 Setting range ..... primary ..... 50 to 650,000 Vac  
 Linear measuring range .....  $1.25 \times V_{rated}$   
 Measuring frequency ..... 50/60 Hz (40 to 70 Hz)  
 Input resistance per path ..... [1] 0.498 M $\Omega$ , [4] 2.0 M $\Omega$   
 Max. power consumption per path ..... < 0.15 W  
**Current** Rated ( $I_{rated}$ ) ..... [1] ..1 A or [5] ..15 A  
 Linear measuring range .....  $I_{source} = 3.0 \times I_{rated}$ ,  
 Burden ..... < 0.15 VA  
 Rated short-time current (1 s) ..... [1]  $50 \times I_{rated}$ , [5]  $10 \times I_{rated}$

**Discrete inputs** ..... isolated  
 Input range ..... 12/24 Vdc (8 to 40.0 Vdc)  
 Input resistance ..... approx. 20 k $\Omega$   
**Discrete outputs Group A [R 1-4]** ..... isolated  
 Contact material ..... AgCdO  
 Load (GP) ..... 2.00 Aac@250 Vac / 2.00 Adc@24 Vdc  
**Discrete output Engine Start [R5]** ..... isolated  
 Contact material ..... AgNi 90/10  
 Load (GP) ..... 10.00 Aac@250 Vac  
**Discrete outputs Group B [R 6-9]** ..... isolated  
 Contact material ..... AgNi 90/10  
 Load (GP) ..... 10.00 Aac@250 Vac  
**RS-485 interface** ..... isolated 500 Vac  
**CAN bus interface** ..... isolated 500 Vac  
**Housing** Flush ..... Type easYpack  
 Dimensions Flush ..... 219x171x61 mm (8.6x6.7x2.4 in)  
 Front cutout Flush ..... 186 [+1.1]x138 [+1.0] mm  
 Material ..... glass fiber-reinforced plastic  
 Connection ..... screw/plug terminals AWG 14 / 2.5 mm<sup>2</sup>  
 Front ..... insulating surface  
 Protection system ..... with proper installation  
     Front ..... IP54 (with clamp fastening)  
     Front ..... IP65 (with screw fastening)  
     Back ..... IP20  
 Weight ..... approx. 800 g (1.75 lb)  
**Disturbance test (CE)** ..... tested acc. to applicable EN guidelines  
**Listings** ..... UL, cUL, GOST-R

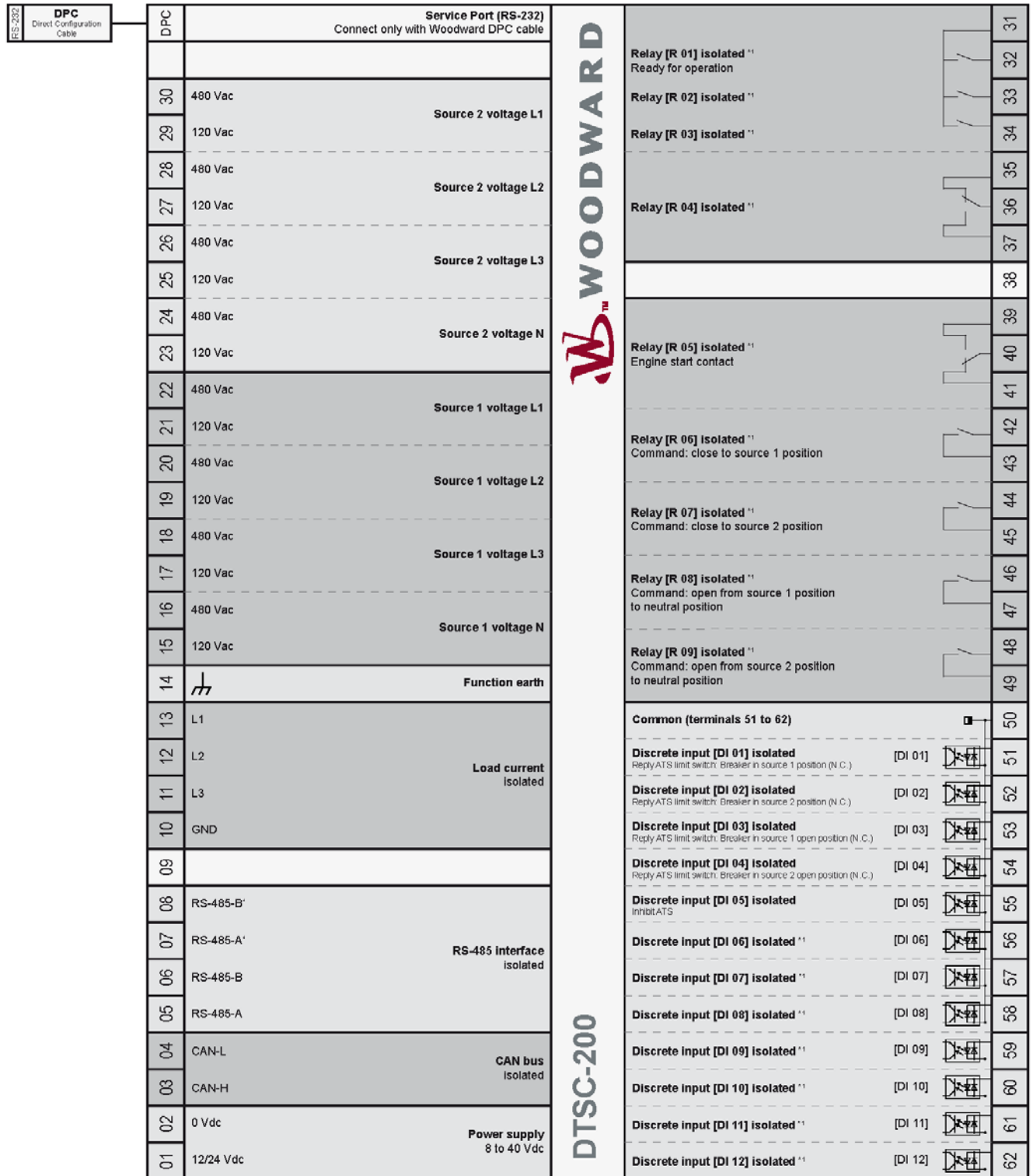
# DIMENSIONS



# PART NUMBERS AND ORDER CODES

Model	Rated PT secondary <i>FlexRange™</i>	Rated CT secondary	Part Number (P/N)	Description	Configuration Software
200	69/120 Vac <b>and</b> 277/480 Vac	..15 A	8440-1868	DTSC-200-55B	ToolKit
		..1 A	8440-1867	DTSC-200-51B	ToolKit

# WIRING DIAGRAM



Subject to technical modifications.

\*\* = configurable via LogicManager

**International**

Woodward  
 PO Box 1519  
 Fort Collins CO, USA  
 80522-1519  
 1000 East Drake Road  
 Fort Collins CO 80525  
 Ph: +1 (970) 498-3634  
 Fax: +1 (970) 498-3058  
 Email:  
 SalesPGD\_NAandCA@woodward.com

**Europe**

Woodward GmbH  
 Handwerkstrasse 29  
 70565 Stuttgart, Germany  
 Ph: +49 (0) 711 789 54-510  
 Fax: +49 (0) 711 789 54-101  
 email:  
 SalesPGD\_EMEA@woodward.com

**Distributors & Service**

Woodward has an international network of distributors and service facilities. For your nearest representative, call the Fort Collins plant or see the World-wide Directory on our website.

[www.woodward.com](http://www.woodward.com)

For more information contact:



Subject to technical modifications.

This document is distributed for informational purposes only. It is not to be construed as creating or becoming part of any Woodward Governor Company contractual or warranty obligation unless expressly stated in a written sales contract.

We appreciate your comments about the content of our publications. Please send comments including the document number below to [stgt-doc@woodward.com](mailto:stgt-doc@woodward.com)

© **Woodward**

**All Rights Reserved**

37398C - 2012/7/Stuttgart

# FEATURES OVERVIEW

Digital Transfer Switch Controller		DTSC-200
<b>Measuring</b>		
Source voltage (3phase/4-wire)	rated 69/120 Vac	✓
- True R.M.S.	max. 86/150 Vac	✓
- <b>FlexRange™</b>	rated 277/480 Vac	✓
	max. 346/600 Vac	✓
Load current #1 (3phase/4-wire, true RMS)	..1 A or ..15 A	✓
<b>Breaker Control</b>		
Open transition (break-before-make)		✓
Delayed transition (break-before-make) + timed neutral position		✓
Closed transition (make-before-break)		✓
<b>Application</b>		
Utility to generator		✓
Utility to utility		✓
Generator to generator (2 start signals)		✓
<b>Features</b>		
Programmable elevator pre-signal		✓
Programmable motor load disconnect signal		✓
Transfer commit		✓
Test modes #2		✓
Transfer mode selector #2		✓
Load shed #2		✓
Shunt trip enable #2		✓
Extended parallel time #2		✓
Automated display backlight shutdown selectable		✓
Daylight saving time		✓
Source priority selection #2		✓
Vector group adjustment for in-phase monitoring		✓
Fully adjustable timers #3		✓
Status LEDs for source availability and breaker state		✓
<b>Accessories</b>		
Soft-keys (advanced LC display)	<b>DynamicsLCD™</b>	✓
Configuration via PC #4		✓
Event recorder with real time clock (battery backup)		300
Flush-mounting (screw or clamp fastening)		✓
<b>Monitoring</b>		
	ANSI#	
Source: voltage	59/27	✓
Source: frequency	810/81U	✓
Source: voltage asymmetry	47	✓
Source: rotation field		✓
Load: overload	32	✓
Load: overcurrent	50/51	✓
Switch: plausible switch position		✓
Switch: transition failure		✓
Battery: voltage		✓
Synch check (inphase monitoring)	25	✓
Parallel time monitoring		✓
<b>I/Os</b>		
Discrete inputs (configurable)		12
Discrete outputs (configurable)	<b>LogicsManager™</b>	9
Direct configuration interface #4		✓
CANopen communication bus (isolated)		✓
RS-485 Modbus RTU Slave full/half-duplex (isolated)		✓
<b>Listings/Approvals</b>		
UL/cUL Listed		✓
GOST-R		✓
CE Marked		✓

#1 Selecton during order; both ..15 A (standard) or both ..1 A (alternatively)

#2 via internal conditions or remote command

#3 neutral delay timers (1 to 6500 s), elevator pre-signal timers (1 to 6500 s), motor load disconnect timers (1 to 6500 s), stable timers (1 to 6500 s), outage timers (0.1 to 10.0 s), engine start delay timers (1 to 300 s)

#4 Configuration software 'Toolkit' available free at [Woodward.com](http://Woodward.com), connection requires Woodward DPC cable P/N 5417-1251