

Hydraulic Amplifier

Electrically Controlled

Applications

The electrically controlled hydraulic amplifier is a pilot operated, linear servo actuator used in conjunction with the Woodward 2301, 500 Series or NetCon[®] electronic controls. The amplifier contains a Woodward EG-3P actuator which converts the electric control signal to a rotary output which controls the servo output position taken by the amplifier. The amplifier is capable of operating the control mechanisms for steam turbines or large engines which require relatively large forces and work capacity beyond that of the actuators normally used with 2301, 500 Series, and NetCon controls.

Features

Two models of this type amplifier are available. The large 7.25 inch (184 mm) and the smaller 5.25 inch (133 mm) models are basically the same except for the diameter of their servo pistons. The 7.25 inch model is capable of developing about twice the force and over double the work capacity of the 5.25 inch model under the same operating conditions. Either size amplifier may operate as single-acting or differential (double-acting). The single-acting is pressure actuated in the increase fuel direction and spring loaded in the decrease fuel direction. Pressure oil moves the differential servo in both increase and decrease directions. The differential amplifier normally has a light return spring to ensure closing the valve during shutdown.

When supply oil pressure is low at start-up, the force available in a differential amplifier may not be sufficient to move the servo to the increase position. An optional transfer valve may be installed to temporarily convert the differential amplifier to a single-acting operation, resulting in more output force on start-up. As oil pressure increases, this transfer valve unseats and re-establishes differential operation.

The EG-3P actuator is an integral part of this amplifier with factory installed hydraulic and electrical connections. The actuator is equipped with an oil motor for rotating the pilot valve bushing to reduce static friction. An internal orifice is supplied for regulating the oil flow to the motor. The actuator also has a maximum stop adjustment to limit the output shaft position, thereby limiting the stroke of the amplifier servo.

The amplifier has two adjustments used for matching the level and range of the servo with that of the actuator output shaft.

An additional option is a port for starting oil which provides a means of opening the fuel or steam valve prior to start-up. In all applications where starting oil is required, a three-way valve (not supplied by Woodward) must be connected to the starting oil port.



- High work output
- Rapid response
- Internal electric actuator
- Independent starting system
- Models are available with listings for US Hazardous Locations
- Models are available compliant with the applicable CE Directives: ATEX, Pressure Equipment, and Machinery

Specifications

INPUT

Resistance (Actuator Coil): 30–35 Ω at 20 °C/68 °F
Maximum Allowable Current: 400 mA
Typical Operating Current Range: 25 to 160 mA
Plug Receptacle: 4 pin MS-3102C-145-2P

OUTPUT

| | | |
|------------------------|---------------------------------------|---------------------------------------|
| Model | 5.25 inch (133 mm) | 7.25 inch (184 mm) |
| Rod Size (dia.) | 1.375 inch (35 mm) | 1.375 inch (35 mm) |
| Thread Size | 1.00 inch–12 UNF2A | 1.00 inch–12 UNF2A |
| Max. Stroke | 2.50 ± 0.030 inch (63.5 ± 0.76 mm) | 3.00 ± 0.030 inch (76.2 ± 0.76 mm) |

Maximum Stalling Force in Increase Direction

Differential Servo

5.25 inch: 9.6P 7.25 inch: 24.5P

where: P = supply pressure (psig)

Spring Return Servo

5.25 inch: 20.2P – (F1 + KX) 7.25 inch: 39.8P – (F1 + KX)

where: P = supply pressure (psig) F1 = spring preload
K = spring scale X = amplifier stroke

Max Side Load on Output Shaft

100 lb (445 N/45 kg)

ADJUSTMENTS

(Accessible by removing cover plate, excluding the EG3P actuator)

Maximum Stop: 0.25 inch–28 x 1.25 inch oval point set screw located on end of EG-3P actuator

Level: 0.25 inch–28 hex locknut on adjustable link between actuator output shaft and amplifier floating lever

Range: 0.375 inch–24 x 0.750 inch UNF-3A socket head screw (3/16 Allen wrench) on floating lever

| | | |
|----------------------------|--------------------------|--------------------------|
| Typical Calibration | 5.25 inch | 7.25 inch |
| 25 mA input | 0.025 inch (0.64 mm) | 0.150 inch (3.81 mm) |
| 160 mA input | 2.165 inch (54.99 mm) | 2.720 inch (69.09 mm) |

CONTROL QUALITIES

Time Constant Hydraulic Amplifier

5.25 inch: 0.2P^{-0.5} sec 7.25 inch: 0.5P^{-0.5} sec

where P = supply pressure in psig

Time Constant EG-3P: 0.5P^{-0.5} + 0.0028P^{+0.5} sec

Hysteresis: Within 3%

CONSTRUCTION

Cover: Cast aluminum

Case: Cast ductile iron or gray iron

Output Rod: Hardened AISI 410 stainless steel

Internal Parts: Stainless steel or case hardened carbon steel

Mass/Weight

5.25 inch: 165 lb/75 kg 7.25 inch: 215 lb/98 kg

MOUNTING

Attitude: Vertical or horizontal with electrical connector or conduit fitting up

Bolts: 0.625 diameter (4)

SERVO

Piston Diameter

5.25 inch: 5.25 inch/133 mm

7.25 inch: 7.25 inch/184 mm

Operation: Single-acting or differential; operation is according to customer requirements

HYDRAULIC SUPPLY

Type

Petroleum based oils (some synthetic lubricants are acceptable for use with Woodward hydraulic amplifiers, contact Woodward for specific oil recommendations)

Source

Prime mover lubricating system or external independent supply

Normal Operating Supply Pressure

690 to 3450 kPa (100 to 500 psi)

Flow

For step input, instantaneous flow to 378 L/min (100 US gal/min) with supply pressure of 827 kPa (120 psig); steady state leakage less than 15 L/min (4 US gal/min) at 1034 kPa (150 psi) 60 SSU—for example, use 20 L/min (5 US gal/min) pump with accumulators

Supply Filters: 10–15 μ m (nominal)

Viscosity: Up to 3000 SSU, but normal performance is based on 50 to 1000 SSU

Operating Temperature

–29 to +116 °C (–20 to +240 °F) maximum

HYDRAULIC FITTINGS (ref. MS 16142)

Supply Inlet

| | |
|------------------|------------------|
| 5.25 inch | 7.25 inch |
| 1.062–12 | 1.625–12 |
| UN 2B thread | UN 2B thread |
| 0.812 deep | 0.906 deep |

Drain: 1.312–12 UN 2B thread, each side of the case; optional internal drain through case bottom is normally plugged

Starting Oil Inlet: 0.562–18 UNF 2B thread; inlet is normally plugged; starting oil option must be specified with purchase order

OPTIONAL FEATURES

Pilot Valve System: Solid or yield (use yield with starting oil); spring loaded to either minimum or maximum fuel

Return Spring: Various return springs are available depending upon operating conditions and amplifier size

Starting Oil: 172 to 345 kPa (25 to 50 psi) starting oil pressure required; use yield pilot valve system

Transfer Valve: Senses supply pressure and temporarily converts the differential amplifier to single-acting servo operation to aid in starting the prime mover

Flange Fittings: Optional supply and drain connections for mounting 1.000 inch (150 lb) steel pipe (per ANSI B16.5)

REGULATORY COMPLIANCE

(Listings are limited only to those units bearing the appropriate Marking or Agency Identification.)

European Compliance for CE Marking:

ATEX Directive: 94/9/EC per LCIE 06 ATEX.6109 X
Zone 1, Category 2, Group II G, Ex e II T6 or
Zone 2, Category 3, Group II G, Ex nA IIC T6

Other European Compliance:

(Compliance with the following European Directives or standards does not qualify this product for application of the CE Marking.)

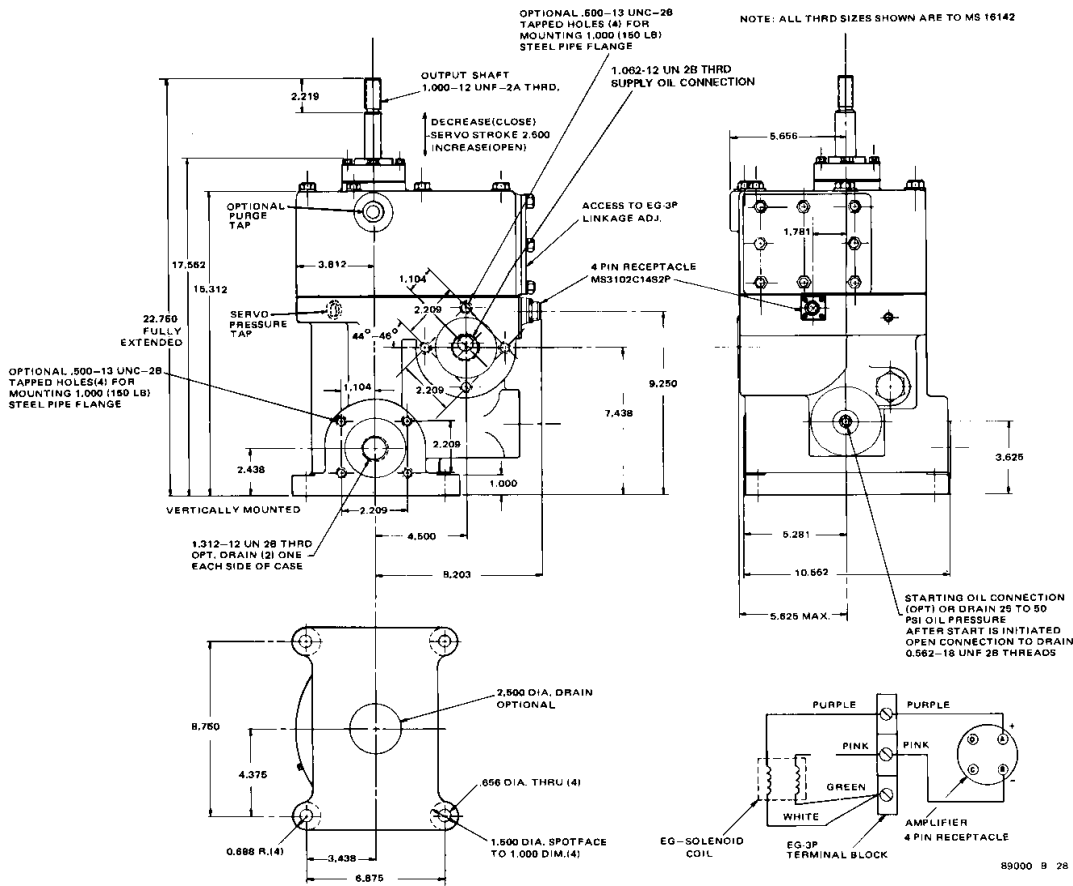
EMC Directive: Not applicable to this product.
Electromagnetically passive devices are excluded from the scope of the 89/336/EEC Directive.

Machinery Directive: Compliant as a component with 98/37/EC

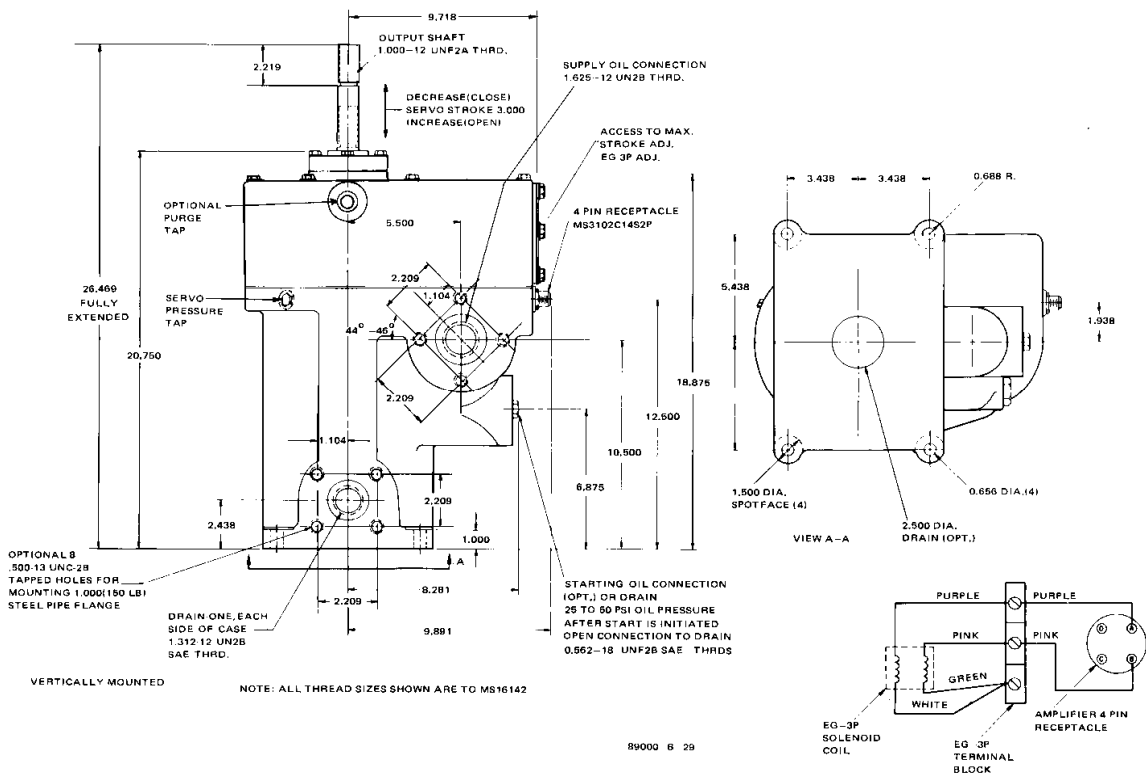
Pressure Equipment Directive: Compliant as “SEP” per Article 3.3 to 97/23/EC

North American Compliance:

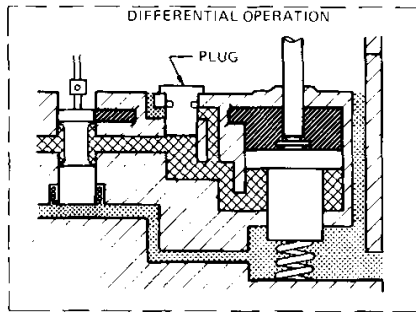
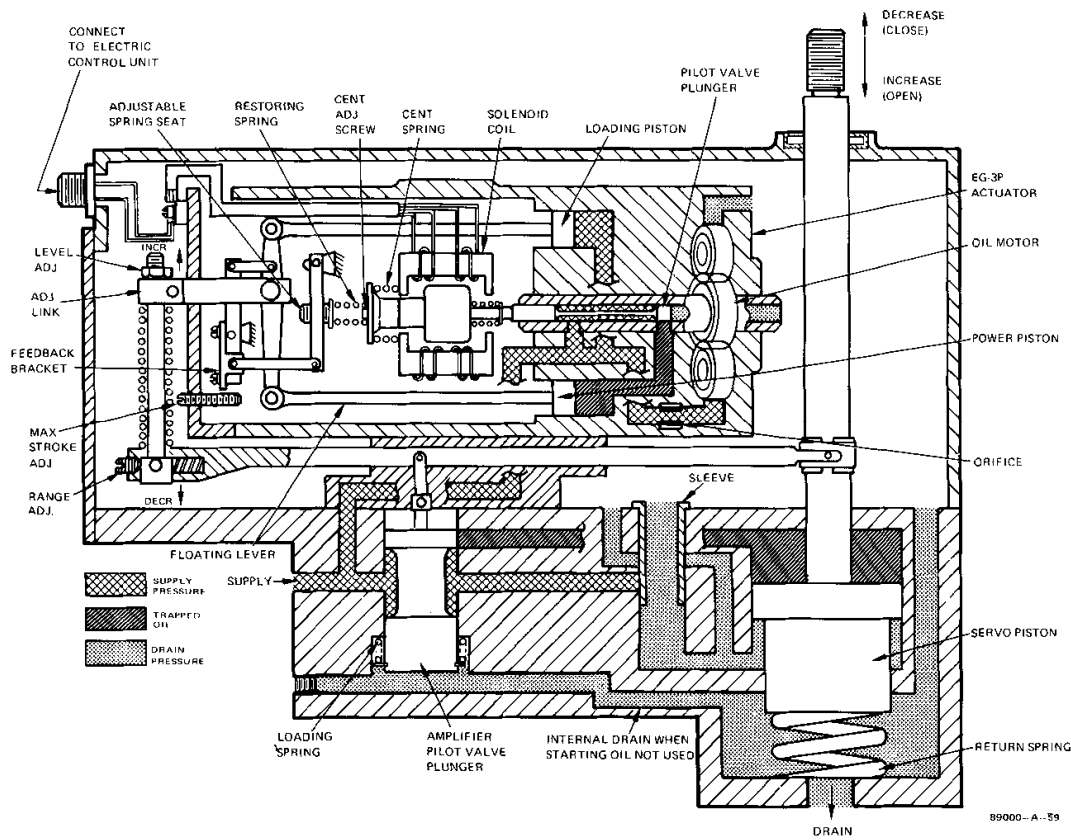
UL: UL Listed for Class I, Division 2, Groups B, C, and D, T3. For use in the United States.



Typical Outline Drawing of 5.25-inch Hydraulic Amplifier



Typical Outline Drawing of 7.25-inch Hydraulic Amplifier
(Do not use for construction)



(Differential Plug)

Schematic Diagram of 5.25-inch Hydraulic Amplifier



PO Box 1519, Fort Collins CO, USA 80522-1519
 1000 East Drake Road, Fort Collins CO 80525
 Tel.: +1 (970) 482-5811 • Fax: +1 (970) 498-3058
www.woodward.com

Distributors & Service

Woodward has an international network of distributors and service facilities. For your nearest representative, call the Fort Collins plant or see the Worldwide Directory on our website.

This document is distributed for informational purposes only. It is not to be construed as creating or becoming part of any Woodward contractual or warranty obligation unless expressly stated in a written sales contract.

Copyright © Woodward 1983–2007, All Rights Reserved

For more information contact:

